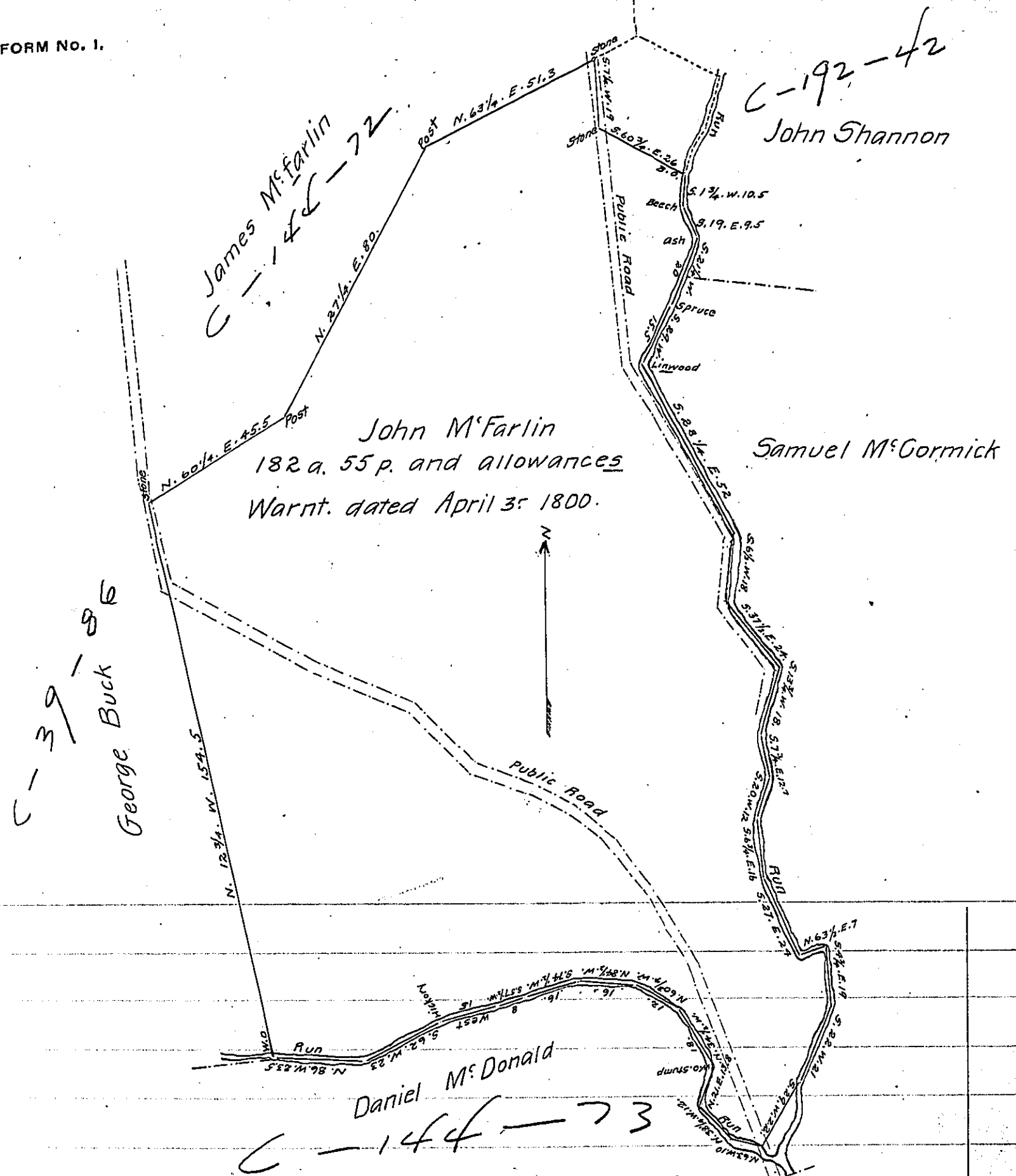


FORM No. 1.



Draft of a tract of Land situated in Mifflin Township
 Cambria Co. Pa. containing one hundred and Eighty two acres and fifty five
 perches and allowance of six percent for roads &c. Surveyed for John
 Barrack and Arasman Billman in persuance of a warrant granted to John
 M'Farlin dated April 3rd. 1800. Surveyed June 3rd. 1885.

S. J. Tritt County Surveyor

To Hon. J. Simpson Africa }
 Secty. Int. Dept.

IN TESTIMONY that the above is a copy of the original remaining on file in
 the Department of Internal Affairs of Pennsylvania, made
 conformably to an Act of Assembly approved the 16th day of
 February, 1833, I have hereunto set my Hand and caused
 the Seal of said Department to be affixed at Harrisburg,
 this thirtieth day of March 1906

Lo-ac N. Brown
 Secretary of Internal Affairs.